



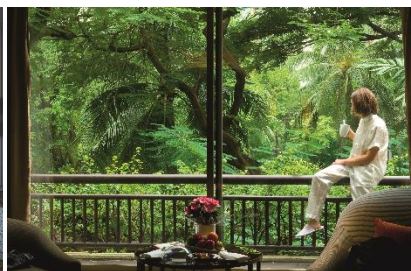
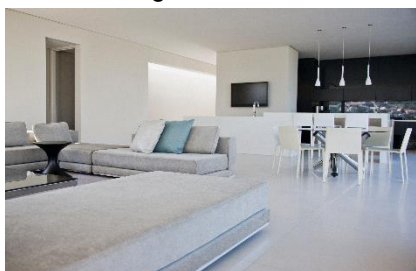
LED Value Ceiling Light



Product	Lumen	Watt.	CCT	Size
LEDVALUE Ceiling 23W/830	1750	23	3000	350mm
LEDVALUE Ceiling 23W/840	1850	23	4000	350mm
LEDVALUE Ceiling 23W/865	1850	23	6500	350mm
LEDVALUE Ceiling 20W/830	1500	20	3000	350mm
LEDVALUE Ceiling 20W/840	1600	20	4000	350mm
LEDVALUE Ceiling 20W/865	1600	20	6500	350mm
LEDVALUE Ceiling 10W/830	700	10	3000	250mm
LEDVALUE Ceiling 10W/840	800	10	4000	250mm
LEDVALUE Ceiling 10W/865	800	10	6500	250mm

Product Benefit

- Easy to connect thanks to 3-PIN terminal block provided.
- Uniform illumination
- Direct connection to AC power supply thanks to integrated control gear
- Class I Luminaire for indoor use.
- Mercury-free and RoHS compliant
- Type of protection: IP20
- Offers in 3 different colors to fulfill different application needs. (3000K/4000K/6500K)
- Lifetime: up to 15,000 h (L70/B50)
- Best in Class color consistency: SDCM 6
- Color Rendering: > 80
- Beam angle: 120



¹ Typical values. All the technical parameters apply to the entire luminaire. In view of the complex manufacturing process for light emitting diodes, the typical values given above for the technical LED parameters are merely statistical values that do not necessarily correspond to the actual technical parameters of an individual product; individual products may vary from the typical values.

² The average lifetime of LED Luminaire is defined as the number of hours when the light output of 50% of a large group of identical lamps goes below 70% of its initial luminous flux (L70B50, IEC62612). The lifetime is estimated at room temperature (25° C), free air burning, base up burning position and at rated voltage.



LED Value Ceiling Light

Product specifications

Product description	Lumen [lm]	Beam Angle	Power [W]	Color	Voltage[V]/ Frequency[Hz]
LEDVALUE CEILING 23W/830 220-240V5X1 OSRAM	1750	120 °	23	Warm-White	220 - 240 V 50 / 60 Hz
LEDVALUE CEILING 23W/840 220-240V5X1 OSRAM	1850	120 °	23	Cool-White	
LEDVALUE CEILING 23W/865 220-240V5X1 OSRAM	1850	120 °	23	Daylight	
LEDVALUE CEILING 20W/830 220-240V5X1 OSRAM	1500	120 °	20	Warm-White	
LEDVALUE CEILING 20W/840 220-240V5X1 OSRAM	1600	120 °	20	Cool-White	
LEDVALUE CEILING 20W/865 220-240V5X1 OSRAM	1600	120 °	20	Daylight	
LEDVALUE CEILING 10W/830 220-240V5X1 OSRAM	700	120 °	10	Warm-White	
LEDVALUE CEILING 10W/840 220-240V5X1 OSRAM	800	120 °	10	Cool-White	
LEDVALUE CEILING 10W/865 220-240V5X1 OSRAM	800	120 °	10	Daylight	

Common Characteristics

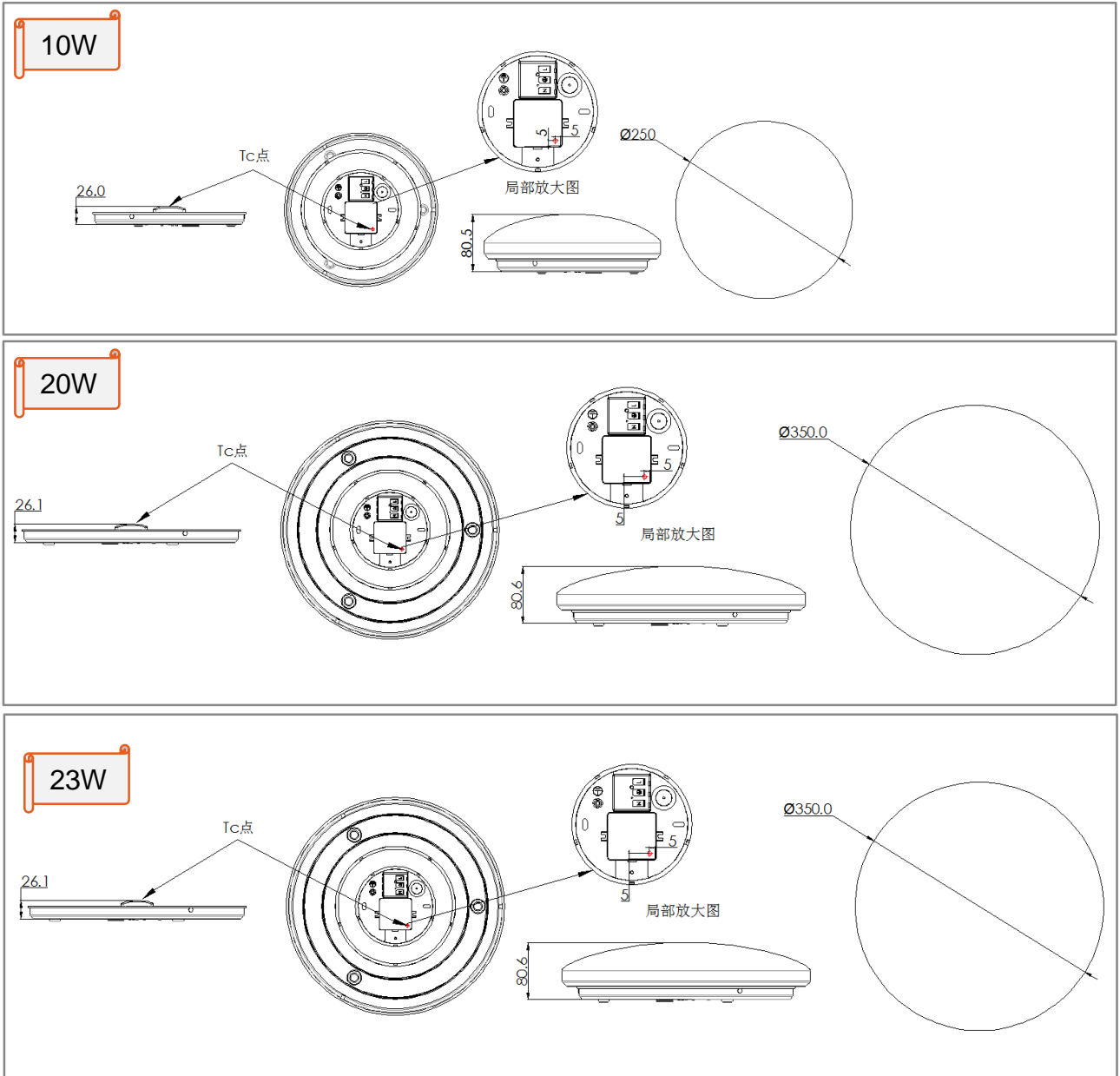
Product Type	Average Lifetime ²	Switching Cycles	Casing Material	Starting Time	Warm up time (For 60% light)
LEDVALUE Ceiling 23W	15,000 hrs	100,000	PMMA	<0.5s	<0.5s
LEDVALUE Ceiling 20W	15,000 hrs	100,000	PMMA	<0.5s	<0.5s
LEDVALUE Ceiling 10W	15,000 hrs	100,000	PMMA	<0.5s	<0.5s
Product Type	Tc Temperature	CRI	Mercury Max.	Lamp Current	Inrush Current
LEDVALUE Ceiling 23W	76°C	> 80	0.0 mg	166 mA	7.20 A
LEDVALUE Ceiling 20W	76°C	> 80	0.0 mg	152 mA	6.92 A
LEDVALUE Ceiling 10W	76°C	> 80	0.0 mg	82 mA	6.40 A

³ The value of beam angle is based on C0/C180 average beam angle (50% I_{max})

³ The T_c is defined as the highest permissible temperature which may occur on the outer surface of the LED lamp (in the indicated position) under normal operating conditions and at the rated voltage/current/power or the maximum of the rated voltage/current/power range (DIN EN 62031: 2009-01)

LED Value Ceiling Light

Mechanical & Electrical Specifications

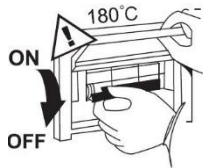


³ The Tc is defined as the highest permissible temperature which may occur on the outer surface of the LED lamp (in the indicated position) under normal operating conditions and at the rated voltage/current/power or the maximum of the rated voltage/current/power range (DIN EN 62031: 2009-01)

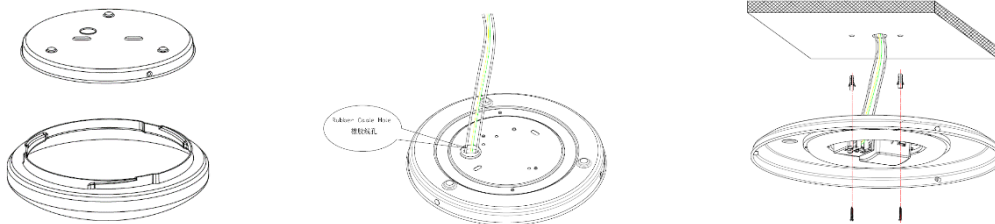
LED Value Ceiling Light

Installation Guideline

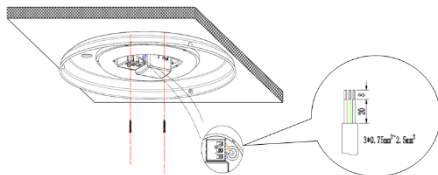
1. Disconnect mains power before assembly.



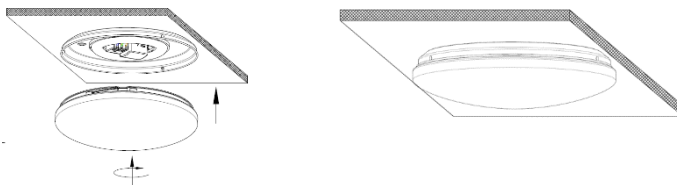
2. Remove the cover from fixture, and insert the 3 power supply wires into the fixture pan through flexible rubber cable hole, then fix the pan on ceiling by screws.



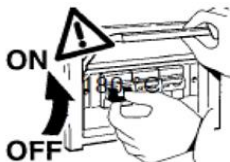
3. Connect the Power supply wires to the Terminal block.



4. Twist the Fixture cover clockwise.



5. Turn the power switch back on to verify that the product is working properly.





LED Value Ceiling Light

Ordering guide

Product description	IC	EAN10	EAN40	Shipping Unit
LEDVALUE CEILING 23W/830 220-240V5X1 OSRAM	AB46523002M	4052899424043	4052899424050	6
LEDVALUE CEILING 23W/840 220-240V5X1 OSRAM	AB46524002M	4052899424067	4052899424074	6
LEDVALUE CEILING 23W/865 220-240V5X1 OSRAM	AB46525002M	4052899424081	4052899424098	6
LEDVALUE CEILING 20W/830 220-240V5X1 OSRAM	AB46526002M	4052899424357	4052899424364	6
LEDVALUE CEILING 20W/840 220-240V5X1 OSRAM	AB46527002M	4052899424333	4052899424340	6
LEDVALUE CEILING 20W/865 220-240V5X1 OSRAM	AB46528002M	4052899424371	4052899424388	6
LEDVALUE CEILING 10W/830 220-240V5X1 OSRAM	AB46494002M	4052899424395	4052899424401	6
LEDVALUE CEILING 10W/840 220-240V5X1 OSRAM	AB46495002M	4052899424418	4052899424425	6
LEDVALUE CEILING 10W/865 220-240V5X1 OSRAM	AB46496002M	4052899424432	4052899424449	6

Application:

- Home Use (Different Size product for Different room)
- Corridors
- Entrances
- Balcony

Warnings

- This product must be installed by a licensed electrical contractor strictly in accordance with local wiring rules.
- Please avoid touching the LEDs.
- LED light module is not replaceable.
- Please contact qualified service personnel to perform the installation and replacement of the ceiling luminaire.
- Please do not attempt to disassemble or change the construction of the luminaire or replace any of the parts to avoid the possibility of injury or product failure.
- Please keep this manual for future reference.
- This product is designed for Indoor use only. It is not intended for installation in wet areas or where the location is exposed to the elements.
- This luminaire is designed for ceiling installation .
- Ambient Temperature is -20°C ~ +40°C (on free air).
- Storage Temperature is -20°C ~ +80°C .

LED Value Ceiling Light

Lamp Conformity

- IEC 60598-1: Luminaires –Part 1: General requirements and tests
- IEC 60598-2-1: Luminaires-Part 2:Particular requirements Section One - Fixed general purpose luminaires
- IEC 61347-1: Lamp controlgear –Part 1: General and safety requirements
- IEC61347-2-13: Lamp controlgear-Part 2-13:Particular requirements for d.c. or a.c. supplied electronic controgear for LED modules
- IEC 62031: LED modules for general lighting - Safety specifications
- IEC 62471: Photobiological safety of lamps and lamp systems - Part 5: Image projectors
- IEC TR 62778: Application of IEC 62471 for the assessment of blue light hazard to light sources and luminaires
- IEC 62493: Assessment of lighting equipment related to human exposure to electromagnetic fields